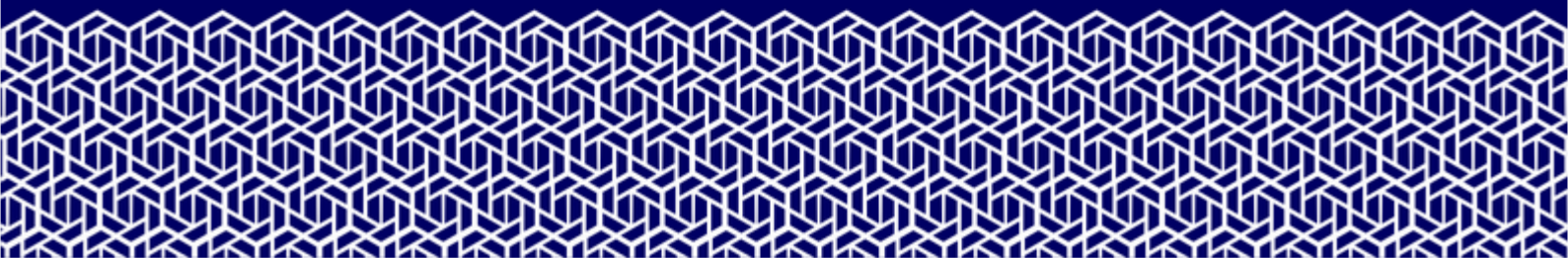


Volume 15, No. 1, June 2022





ISSN 1693-2102 (Printed)
ISSN 2686-2352 (Online)

Preface

All Praise belongs to Allah SWT who has bestowed infinite blessings and gifts on all of us. OPSI is an Industrial System Optimization Journal published by the Industrial Engineering Department of Universitas Pembangunan Nasional "Veteran" Yogyakarta to publish scientific works or technological engineering research related to Industrial Engineering, Industrial Systems, Industrial Management and Information Technology.

OPSI ISSN 2686-2352 (online) and 1693-2102 (printed) are published regularly every 6 months (in June and December). OPSI provides readers with open access to download and read the contents of the journal. This journal fully supports the commitment to exchange information and knowledge with the public. All articles are open access, yet, readers are not allowed to change the article's contents without the permission of the publisher. OPSI Journal has been accredited SINTA 3 by The Ministry of Research, Technology and Higher Education (RistekDikti), acknowledged on December 23rd, 2020.

Editor would like to appreciate all researchers, academicians, industrial practitioners who contribute in Opsi journal as Author, Reviewer and Reader. We hope that this Journal will provide the greatest benefit to the science and engineering. The editor realizes that this journal, still requires improvements in various places, therefore the editors always expects input from the contributor to provide suggestions, and ideas for the higher achievement.

Yogyakarta, June 2022

Editorial OPSI
Jurusan Teknik Industri
FTI UPN "Veteran" Yogyakarta
Jalan Babarsari 2 Tambakbayan Yogyakarta 55281
Telp. (0274) 486256
Website <http://jurnal.upnyk.ac.id/index.php/opsi>
email : jurnal.opsi@upnyk.ac.id



ISSN 1693-2102 (Printed)
ISSN 2686-2352 (Online)

Editor in Chief

Eko Nursubiyantoro, S.T., M.T.

Editorial board

Hasan Mastriswadi, S.T., M.Sc.

Ismianti, S.T., M.Sc.

Astrid Wahyu Adventri Wibowo, S.T., M.Sc.

Yuli Dwi Astanti, S.T., M.T.

Berty Dwi Rahmawati, S.T., M.Sc.

Puji Handayani Kasih, S.T., M.T.

Reviewers

Amalia Amalia, (Sinta ID: 6704150) Universitas Dian Nuswantoro, Indonesia

Amalia Azka Rahmayani, (Scopus ID: 57160460200) UIN Sunan Kalijaga Yogyakarta, Indonesia

Amanda Sofiana, (Scopus ID: 57190292768) Universitas Jendral Soedirman, Indonesia

Agus Ristono, (Scopus ID: 57205338485) Universitas Pembangunan Nasional "Veteran" Yogyakarta

Agustina Eunike, (Scopus ID: 57201863289) Universitas Brawijaya, Indonesia

Annisa Uswatun Khasanah, (Scopus ID: 57195477115) Universitas Islam Indonesia, Indonesia

Apriani Soepardi, (Scopus ID: 36835821300) Universitas Pembangunan Nasional "Veteran" Yogyakarta

Ardiyanto Ardiyanto, (Scopus ID: 57202017598) Universitas Gadjah Mada, Indonesia

Atyanti Dyah Prabaswari, (Scopus ID: 57200105937) Universitas Islam Indonesia

Dawi Karomati Baroroh, (Scopus ID: 57195346196) Universitas Gadjah Mada, Indonesia

Deni Saputra, (Sinta ID: 6713315) Politeknik Industri Furnitur dan Pengolahan Kayu, Indonesia

Dewa Kusuma Wijaya, (Sinta ID: 6663274) Universitas Dian Nuswantoro, Indonesia

Dina Tauhida, (Scopus ID: 57211270762) Universitas Muria Kudus, Indonesia

Diva Kurnianingtyas, (Scopus ID: : 57208510469) Universitas Brawijaya, Indonesia

Hapsoro Agung Jatmiko, (Sinta ID: 6672879) Universitas Ahmad Dahlan, Indonesia

Heru Prastawa, (Scopus ID: 56023332800) Universitas Diponegoro, Indonesia

Indah Pratiwi, (Scopus ID: 57200043755) Universitas Muhammadiyah Surakarta, Indonesia

Isnaini Nurisulawati, (Scopus ID: 57204785642) Institut Teknologi Telkom Purwokerto, Indonesia

Lobes Herdiman, (Scopus ID: 56966767700) Universitas Sebelas Maret Surakarta, Indonesia

M. Mujiya Ulkhaq, (Scopus ID: 57201078267) Universitas Diponegoro, Indonesia

Mastiadi Tamjidillah, (Scopus ID: 57200247036) ULM Banjarmasin, Indonesia

Mega Inayati Rif'ah, (Scopus ID: 57205093427) Institut Sains & Teknologi AKPRIND, Indonesia

Muhammad Kusumawan Herliansyah, (Scopus ID: 23469293700), Universitas Gadjah Mada

Okie Anita Candra Dewi, (Scopus ID: 57203391390) Universitas Internasional Semen Indonesia, Indonesia

Orchida Dianita, (Scopus ID: 57205101267) Universitas Gadjah Mada, Indonesia

Prita Meilanitasari, (Scopus ID: 57200855474) Hanyang University, Korea, Republic of

Rossi Septy Wahyuni, (Scopus ID: 56401222300) Universitas Gunadarma, Indonesia

Pramudi Arsiwi, (Scopus ID: 56820192900) Universitas Dian Nuswantoro, Indonesia

Sadi Sadi, (Scopus ID: 56565463100) Universitas Pembangunan Nasional "Veteran" Yogyakarta, Indonesia

Titi Sari, (Scopus ID: 57195197765) UIN Sunan Kalijaga Yogyakarta, Indonesia

V. Reza Bayu Kurniawan, (Scopus ID: 57212481335) Universitas Sarjanawiyata Tamansiswa, Indonesia

Wandhansari Sekar Jatiningrum, (Scopus ID: 57192999049) Universitas Ahmad Dahlan, Indonesia

Wangi Pandan Sari, (Sinta ID: 6738802) Universitas Gadjah Mada, Indonesia

Yun Prihantina Mulyani, (Scopus ID: 57193002126) Universitas Gadjah Mada, Indonesia

Editorial OPSI

Jurusan Teknik Industri

FTI UPN "Veteran" Yogyakarta

Jalan Babarsari 2 Tambakbayan Yogyakarta 55281

Telp. (0274) 486256

Website <http://jurnal.upnyk.ac.id/index.php/opsi>

email : jurnal.opsi@upnyk.ac.id



ISSN 1693-2102 (Printed)
ISSN 2686-2352 (Online)

Contents

Dynamic system simulation of food Additives To Fulfill Consumer Needs and Increase Farmer Profits <i>Yuli Dwi Astanti, Reiza Novita Putri, Laila Nafisah</i>	1-8
Optimization of the South Coast Seawater Purification Process by Using a Circulating Adsorption Column <i>Amallia Ferhat, Mohammad Prasanto Bimantio</i>	9-16
The Effectiveness of Social Media in Increasing Community Attitude in The Furniture and Wood Processing Industry Polytechnic <i>Alfani Risman Nugroho, Dian Eko Hari Purnomo, Deni Saputra, Muhammad Hanif Fathoni</i>	17-23
Decision Support System Assessment Of Truck Driver Work Mental Load in Giwangan Market Area, Yogyakarta Using NASA-TLX <i>Riani Nurdin, Bagus Wahyu Utomo, Harliyus Agustian</i>	24-33
Development of the Capacitated Maximal Covering Location Problem (CMCLP) Model in Determining the Location and Type of Distribution Center <i>Santoso Santoso, Rainisa Maini Heryanto</i>	34-41
The Design of Peanut Washer Machine to Ease and Speed Up the Washing Time of Peanut in UKM Arjuna <i>Mathilda Sri Lestari, Ainur Komariah, Rahmatul Ahya, Rian Prasetyo</i>	42-47
The Influence of Knowledge Management and Organization Innovativeness on The Organizational Resilience: A Theoretical Framework <i>Annisa Dewi Akbari, Didi Suhardini, Agung Sasongko</i>	48-55
Analysis of Total Productive Maintenance (TPM) Application Using Overall Equipment Effectiveness (OEE) and Six Big Losses on Disamatic Machine PT. XYZ <i>Musyafa'ah Musyafa'ah, Amanda Sofiana</i>	56-63
Facility Layout Design of New Warehouse and Implementation of Multi-Criteria Decision Making for Product Allocation at PT XYZ <i>Viter Pranata, Santoso Santoso</i>	64-76
Analysis of Drowsiness with Karolinska Sleepiness Scale and Heart Rate while Driving with Three Stage Road Difficulty Using Driving Simulator <i>Winda Halim, Anggie Ervany Haryono</i>	77-84
Analysis of Factors Affecting Consumer Satisfaction Using SEM (Structural Equation Modeling) Method <i>Much Djunaidi, Ranis Duanda Gunari</i>	85-92

Editorial OPSI
Jurusan Teknik Industri
FTI UPN "Veteran" Yogyakarta
Jalan Babarsari 2 Tambakbayan Yogyakarta 55281
Telp. (0274) 486256
Website <http://jurnal.upnyk.ac.id/index.php/opsi>
email : jurnal.opsi@upnyk.ac.id



ISSN 1693-2102 (Printed)
ISSN 2686-2352 (Online)

Design of A Flexible Table Height (Kafleks) with Quality Function Deployment (QFD) Method <i>Ika Nurlala, Risma Fitriani</i>	93-106
Workload Analysis Using Cardiovascular Load and NASA-TLX Method Of Emergency Room Health Workers (Case Study: Rumah Sakit Tingkat III Brawijaya) <i>Melani Pratiwi Munir Putri</i>	107-115
Applying AHP-TOPSIS Approach for Selecting Marketplace based on Preferences of Generation Z <i>Wandhansari Sekar Jatiningrum, Sri Nastiti Andayani Sesanti Retno Utami, Wardatus Sholihah, Ashof Abdulmajid, Reinna Desstryani</i>	116-123
Sentiment Analysis of JNE User Perception using Naïve Bayes Classifier Algorithm <i>Annisa Uswatun Khasanah, Adelia Febriyanti</i>	124-130

Editorial OPSI
Jurusan Teknik Industri
FTI UPN "Veteran" Yogyakarta
Jalan Babarsari 2 Tambakbayan Yogyakarta 55281
Telp. (0274) 486256
Website <http://jurnal.upnyk.ac.id/index.php/opsi>
email : jurnal.opsi@upnyk.ac.id

Redaksi Jurnal OPSI :

Jurusan Teknik Industri Fakultas Teknik Industri
Universitas Pembangunan Nasional "Veteran" Yogyakarta
Jl. Babarsari 2 Tambakbayan, Yogyakarta 55281
Telp. (0274) 486256
Email: jurnal_opsi@upnyk.ac.id



P- ISSN



e-ISSN